

MONTHLY MEMBERSHIP PROGRESS REPORT

LOCATION ONTARIO

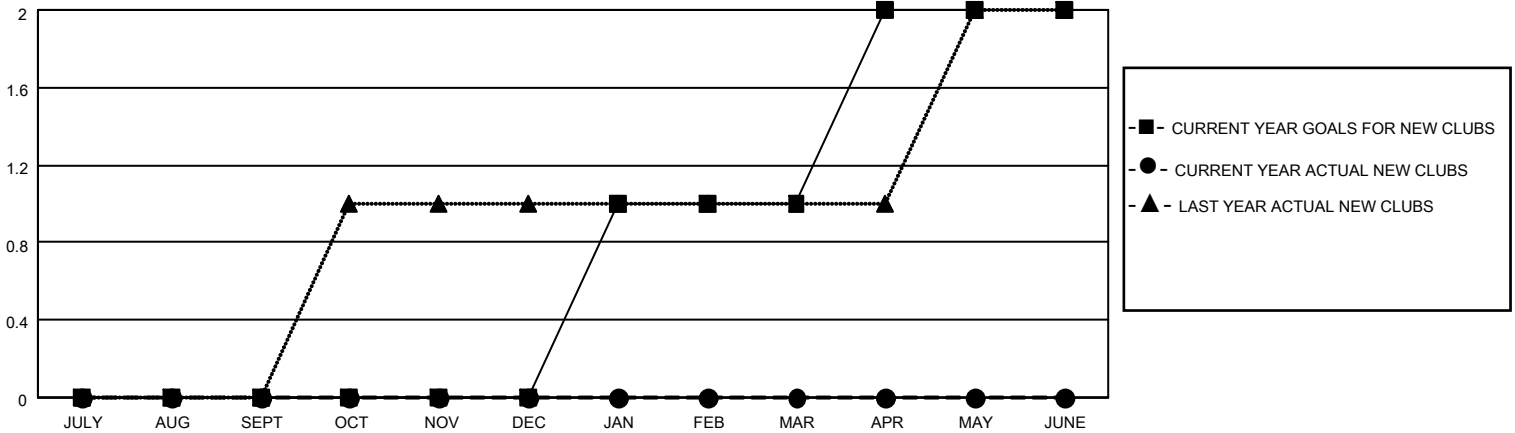
District A 1

Results as of: 4/30/2022

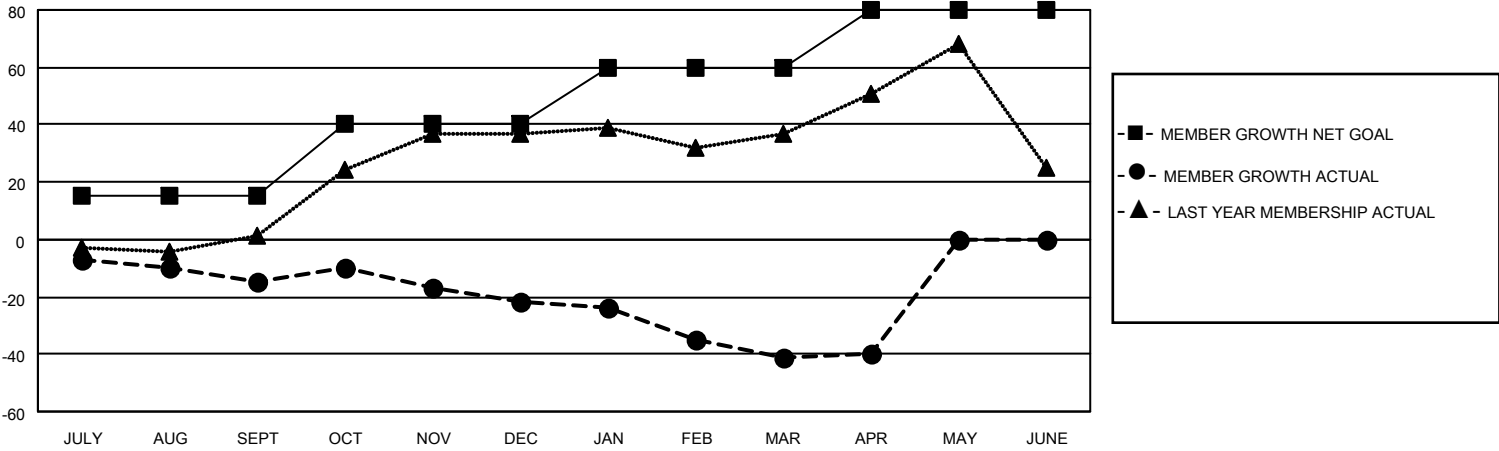
Clubs			
RESULTS FOR 2021-2022			
QUARTER	NEW CLUB GOAL	NEW CLUBS	DROPPED CLUBS
JULY/AUG/SEPT	0	0	0
OCT/NOV/DEC	0	0	0
JAN/FEB/MAR	1	0	0
APR/MAY/JUNE	1	0	0

Members			
RESULTS FOR 2021-2022			
QUARTER	MEMBER GROWTH NET GOAL	MEMBER GROWTH ACTUAL	DROPPED MEMBERS ACTUAL (including transfers)
JULY/AUG/SEPT	15	8	22
OCT/NOV/DEC	25	31	36
JAN/FEB/MAR	20	6	24
APR/MAY/JUNE	20	9	8

GOALS AND ACTUAL NEW CLUBS CUMULATIVE



GOALS AND ACTUAL MEMBERS CUMULATIVE



DROPPED CLUBS: 0

18 CLUBS OF 41 ADDED 1 OR MORE NEW MEMBERS

GENDER DISTRIBUTION

MALE	840 (73.36%)
FEMALE	305 (26.64%)
NON BINARY	0 (0.00%)
PREFER NOT TO ANSWER	0 (0.00%)

DROPPED MEMBERS

[CLICK HERE FOR CUMULATIVE MEMBERSHIP DATA](#)

DECEASED	20
CLUB CANCELLED	0
OTHER	70
TOTAL	90

TOTAL FAMILY UNIT MEMBERS	183
FAMILY MEMBERS PAYING HALF DUES	92